

FREQUENTLY ASKED QUESTIONS for SPLIT LEVEL CONCERTS at JERSEY SHORE ARTS CENTER (JSAC)

What is JSAC's address?

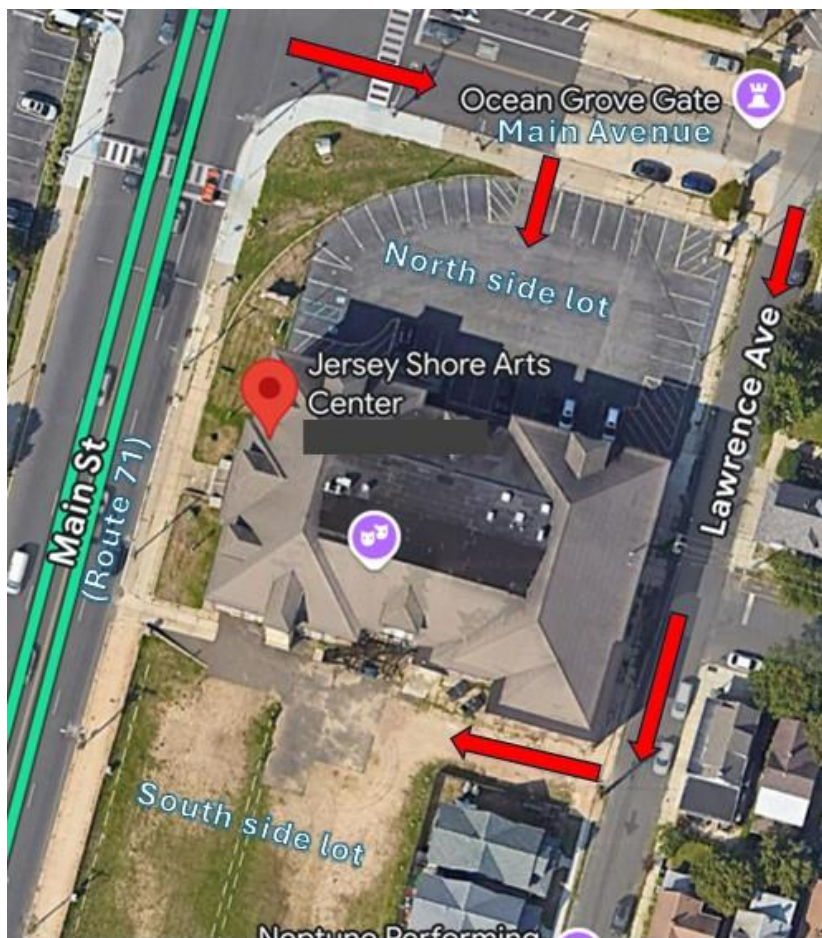
JSAC is located at 66 South Main Street in Ocean Grove, NJ

What time do doors open?

We will open the outside doors to the lobby at 6:45 PM. Doors for the Palatia Theater will open at 7:30 PM. Seating is General Admission.

Is there parking on site?

Yes, JSAC has plenty of free parking available on site. If you turn on to Main Avenue from Main Street (Rte. 71), turn right at the first driveway to access the lot on the northern side of the building. If that lot is full, there is additional parking on the southern side of the building. Simply turn right on the first street past the building (Lawrence Avenue) and then turn right again at the driveway just past the back of the building to access the south side lot. If both lots are full, free on street parking is available in the area around JSAC.



Are there restaurants nearby?

There are many great places to eat in Ocean Grove and neighboring Asbury Park, which is just a block away from the theater. Those coming in from the south and west will also pass through Neptune and/or Bradley Beach - both of which offer a variety of options, as well.

Please consider supporting our Series and Web/Social Media Sponsors when making your plans!

Ocean Grove

[Sea Grass
Dinner Menu](#)

Asbury Park

[Flavia's
Dinner Menu](#)

[Moonstruck
Dinner Menu](#)

[Pascal & Sabine
Dinner Menu](#)

Neptune

[il Posto
Dinner Menu](#)

If you're looking for something more casual, series friend [Crust and Crumble](#) is also just a short walk north across the bridge into Asbury Park. The Italian nachos are a must!

Most importantly, Superhero Sponsor [Cookman Creamery](#) will be open after the show for dessert!

We are planning to spend the whole weekend at the Jersey shore. Are there places to stay nearby?

Both Ocean Grove and neighboring Asbury Park offer a plethora of lodging options ranging from ocean front hotels to cozy air b-n-bs.

<https://www.oceangrovenj.com/lodging>

The [Laingdon Hotel](#), which is one of our Web/Social Media Sponsors, is located in Ocean Grove, directly across the street from the beach and just a short walk to JSAC. Be sure to mention that you're in town for a Split Level Concert at JSAC when making reservations for \$20 off the standard room rate.

Will there be refreshments available at the show?

Yes, light refreshments, such as bottled water, coffee, tea, and candy will be available. Alcoholic beverages will not be available.

What are the approximate set times for the opener? The headliner?

Although timing is not an exact science, you can anticipate opening acts to begin at approximately 8:10, after some brief stage announcements. The opener's set will be 20-25 minutes in duration. The headliner will hit the stage approximately 15 minutes after the opening set is over.

What is Musicians On A Mission and how can I help?

[Musicians On A Mission](#) is a non-profit organization dedicated to creating connection and inspiring giving through music. MOAM will be at every Split Level show, collecting cash donations that will be donated to a charity chosen by MOAM for each concert. November's beneficiary is [Holiday Express](#). In addition, MOAM is also partnering with [Fulfill](#) (formerly The FoodBank of Monmouth & Ocean Counties) and collecting donations of non-perishable food items throughout the duration of the series. As a thank you for your cash or food donation(s), be sure to enter our raffle for a chance to win a gift card generously provided by one of our series sponsors, [Pascal and Sabine](#).